

Eliau

Installation Manual with the Anoto DP-201

Version 1.13

Distributed by **SELDAGE**, SARL,
91190 GIF SUR YVETTE
Website : <http://www.seldage.com>
e-mail : info@seldage.com

© Eliansoftware / Seldage 2005 – 2013

Please read carefully this Manual before installation

Download and install Elian

The installation process is fully automated. Let's look at how it works.

NB: if you previously installed a version of Elian scheduled for another digital pen (Anoto or Nokia), please first uninstall it (see at the end of this document).

The version of Elian with Anoto pen DP-201 works with Windows XP, Vista and 7. It can also run on Mac into a Windows virtual machine.

If you use Windows Vista or 7, click "yes" when Windows prompts you for permission to perform an operation.

A fast Internet connection (DSL or cable) is needed during installation.

If not, ask for a CD-ROM by mail to "support@seldage.com" or download the installer from the site using another computer and copy it on a USB key.

Type in Google "Eliansoftware" or "Seldage", the result is equivalent and lead to the site and even "http://www.seldage.com." Then go to the "Download" and then "Download Elian for Anoto pen."

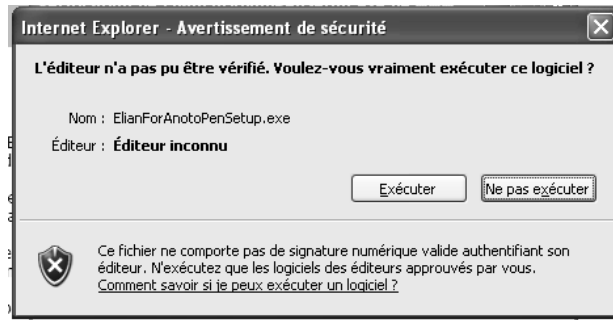
Please note, two other versions (demo version or for other pens) are not used for this pen and will lead to error messages.

The following window appears (in Internet Explorer. With other browsers, you may be the choice to register the software. It will then run it then):

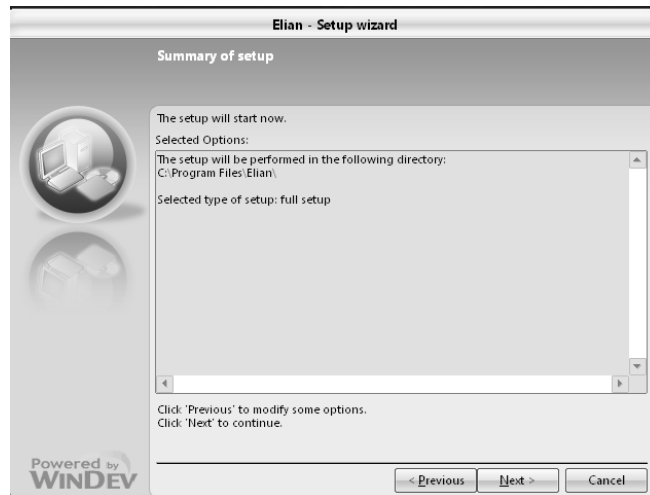


Then click on "Run" (or "Save"). A download window opens. Wait until it is finished (few minutes).

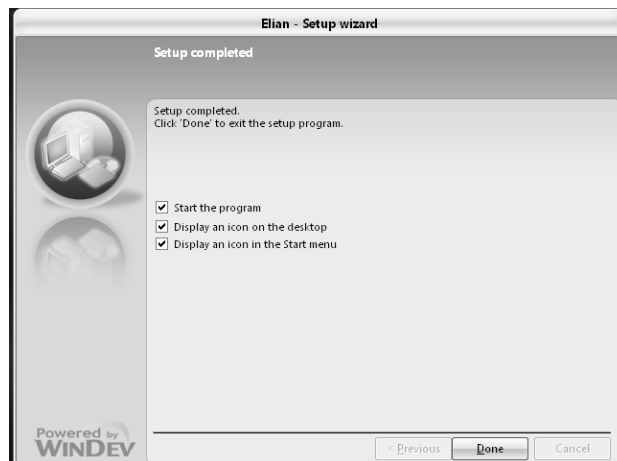
At the end of the download, the following window appears:



Then click on "Run". The Run window appears, then another:



Click "Next". The installation then takes place.



Click on "Done".

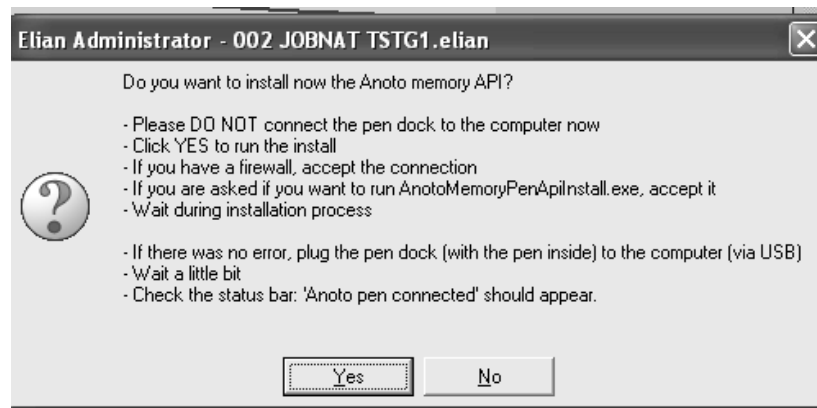
The software "Elian" opens and then asks the registration code. Make a copy and paste the code you received by mail and click "OK". If you do not have a code, send us a request by email to support@eliansoftware.com.



You will see a message with your name and user specifications.

To install the pen, now click on the menu "Pen / Anoto pen API setup."

At this point, do not connect the base of the pen on the USB port of your computer. Wait until the installation is complete. Thereafter, you can leave the base plugged into a USB all the time. When the pen is placed in the cradle, it charges its batteries.



Then click on "Yes". The installation then takes place.

If you have installed a firewall, accept the connection request, even if you are not connected to the Internet currently. This acceptance is required for the smooth installation.



Then click "OK". Installation is complete.

The Anoto DP-201

The Anoto Digital Pen DP-201 is an easy to use, especially with the software "Elian". But you must still be very careful.

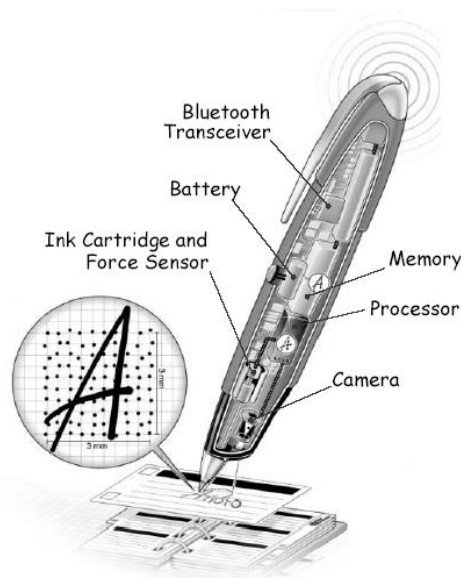
The pen is fragile. It is recommended to leave it in its bag if not used. It will not be covered under warranty (one year) in case of fall.

The pen was provided to you already loaded. It must maintain its charge. It is done when he is on his cradle, connected to the USB port of a computer on.

We can check its charge over Elian by clicking on "Pen / Anoto pen information" on line "Battery status."

The pen has been supplied with additional ball-pen mines. Only mines marked "Anoto" are used. They write in blue (black ink gene reading frame with the pen.

To change mine, just put the tip into the small hole at the base of the cap clip, slightly tilting of the clip so that it retains the tip of the mine. Pull gently. It puts the new mine by hand.



To understand the use of the pen must be instructed in its use. He reads a frame generated by an algorithm, using an infrared laser camera placed under the mine (not to confront). If the mask (by rule), the pen can no longer function.

Only the sheets of paper supplied by us can be used. It can not be photocopied.

Using the pen

After Elian being installed, please test with the pen and paper. Take a Anoto/Seldage sheet of paper, provided with "Elian," make a small dash in a corner of the sheet.

Place the pen on its cradle, connected to the USB port of your computer on. A window will appear. Click "OK"



A window will quickly appear with a green bar, then the page appears, with your little line in a corner of the sheet.

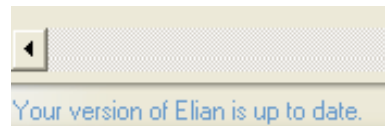
If you want to destroy this file test, click the button "Del"

You are ready to use Elian. For more information, see "Manual".

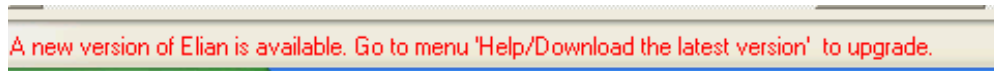
Update Elian

Elian is updated regularly. If you want to get the latest version, log on regularly to the Internet.

If it is updated, the following message (below and left of the screen):



Otherwise it is indicated:



Uninstalling Elian DP-201

It is extremely simple.

Go to "Settings / Control Panel / Add or Remove Programs" and go down to "SetupAnotoDII." Then click on "Delete" and confirm. Similarly, choose "Elian" in the list to uninstall it.

If the antivirus messages, confirm that you want to make the work "normally".

Then restart the computer.

Uninstalling Elian version Nokia / Logitech

Those who want to use the pen "Anoto DP-201" after using the pen "Logitech" or "Nokia" must first have uninstalled all programs. Indeed, they are not compatible.

The procedure is relatively complex, but poses no particular problem.

First, click on "Ctrl + Alt + Supr" to display the "Windows Task Manager". Go to the tab "Processes". Click on the bar "Image Name" to place them in alphabetical order and go to "OedipsystemLosApi.exe." Then click on "End Process" and confirm the message that appears at once.

Then go into "Settings / Control Panel / Add or Remove Programs" and go down to "FMSFormprocessor 01/01/15." Then click on "Delete" and confirm. If the antivirus messages, confirm that you want to make the cuts "normally".

Then uninstall the pen "Nokia" by going to "Nokia Digital Pen Application Suite". Click "Delete" and confirm the deletion. For now, do not restart the computer.

Uninstalling the pen "Logitech" (if you installed it) is somewhat more complex. Open, as before, the "Windows Task Manager" by clicking "Ctrl + Alt + Supr," click on "Process" and then on the bar "Image Name". Click on the line "Logitech.Pen.LPLsHost.exe" then "Finish the process," confirm, then "Logitech.Pen.Trailicon.exe" and confirm.

In the "Add or Remove Programs", then go down to "Digital Pen Software" (provided the small image representing the Logitech pen. Click on "Change / Remove" and confirm the deletion.

Restart the computer.